

# **Telenor Data Application Note: Configuring a Modem Connection to Inmarsat Terminals using Windows 98**

Document Number: 2003INMC072103-2  
Issue: 1.00

Date: 31 July 2003

For further information contact TSS's Customer Care Department at +1 301 838 7700 or 1 800 685 7898 (toll free inside North America) or send an e-mail to [customer.care@telenor.com](mailto:customer.care@telenor.com).

Telenor Data Application Note:  
Configuring a Modem Connection to Inmarsat Terminals  
using Windows 98

Doc No. 2003INMC072103-2

---

## Table of Contents

|                                                   |          |
|---------------------------------------------------|----------|
| <i>Software Version</i> _____                     | <b>1</b> |
| <i>Overview</i> _____                             | <b>1</b> |
| <i>Prerequisites</i> _____                        | <b>1</b> |
| <i>Setting up a Windows 98 Modem Device</i> _____ | <b>2</b> |

# Telenor Data Application Note: Configuring a Modem Connection to Inmarsat Terminals using Windows 98

Doc No. 2003INMC072103-2

---

## **SOFTWARE VERSION**

Microsoft® Windows 98

It should be noted that the version of Windows used for testing and writing this Data Application Note was Windows 98. Other versions have slightly different set-up screens, but the basic configuration is the same.

## **OVERVIEW**

Microsoft Windows is one of the most popular operating systems available. This Application Note (AppNote) provides the end-user with step-by-step instructions for how to configure a modem in the end-user's PC to communicate with an Inmarsat terminal.

Built-in voiceband data modems are available in many models of Inmarsat terminals (e.g., Nera WorldPhone, Thrane & Thrane Capsat® Mobile Telephone). In this case, the PC or laptop communicates with the Inmarsat terminal as if it were an external modem. When using an Inmarsat terminal with high-speed data capability (e.g., Thrane & Thrane Capsat Messenger, Nera WorldCommunicator), you should connect an Inmarsat terminal to a compatible external ISDN terminal adapter (TA) (such as an Eicon Diva or KlasHopper). The Nera WorldCommunicator also provides an internal PP modem for use when accessing the Internet.

Follow the steps in this AppNote to set-up a modem device under Windows 98 that will communicate with the Inmarsat terminal.

## **PREREQUISITES**

This Application Note assumes that the end-user has already activated their Inmarsat terminal with one of Telenor's service providers. It also assumes the end-user has some basic knowledge of how to use the Windows platform and has previously installed and configured a modem with some other terrestrial connection.

## Telenor Data Application Note: Configuring a Modem Connection to Inmarsat Terminals using Windows 98

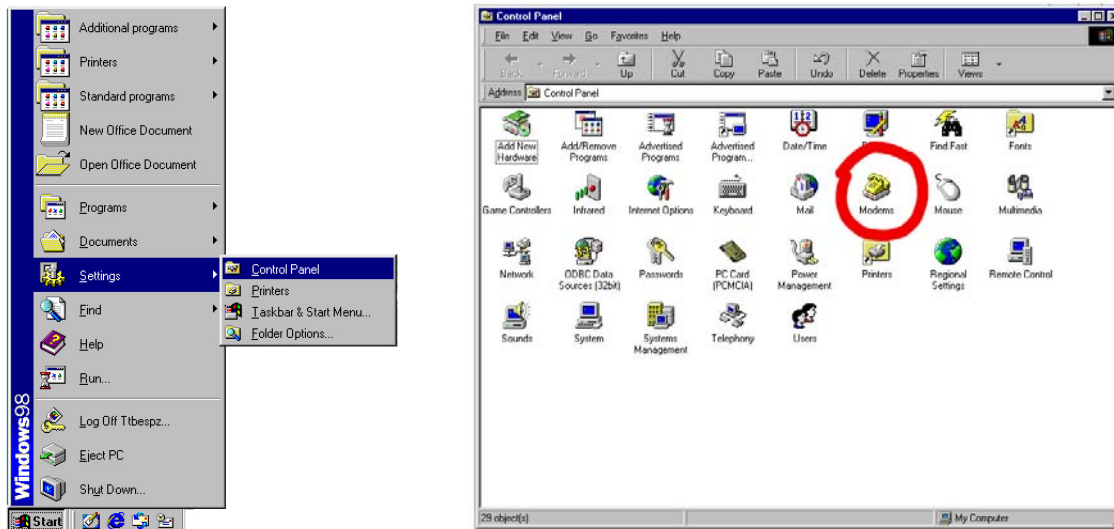
Doc No. 2003INMC072103-2

### SETTING UP A WINDOWS 98 MODEM DEVICE

Follow the steps below to set up a modem device under Windows 98 that will communicate with the Inmarsat terminal. If the procedure as described below does not work, please check your Satellite Terminal Manual.

When using an Inmarsat terminal with a built-in modem, you typically connect the Inmarsat terminal to your PC or laptop using a serial cable. In this section, you will need to know the name of the PC port to which the terminal is connected. If you have only one communications port on your PC, it will be 'COM1'. Otherwise, the ports will be labeled as COM or Serial ports, and distinguished by A and B or 1 and 2. Port 1 or A is COM1, port 2 or B is COM2.

1. If the Control Panel window is not already open; from the Windows 98 **"Start"** menu, select the option **"Settings -> Control Panel"**. The control panel window will appear.

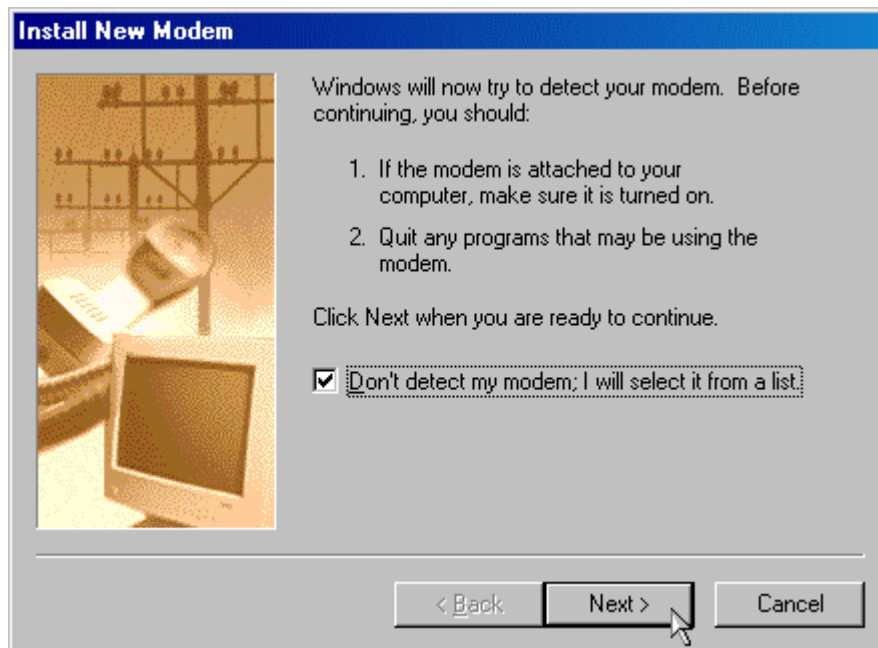


2. Double click on the **"Modems"** icon.

## Telenor Data Application Note: Configuring a Modem Connection to Inmarsat Terminals using Windows 98

Doc No. 2003INMC072103-2

3. If a window titled “Modem Properties” appears, press the “**Add...**” button, otherwise, continue to step 4.
4. If you are using a lap-top, when asked what type of modem you wish to install, check the “**other**” option and press the “**Next >**” button.
5. When asked whether to allow Windows to detect the modem, tick the “**Don’t detect my modem; I will select it from a list**” box, to stop Windows detecting the modem automatically. Then press the “**Next >**” button.

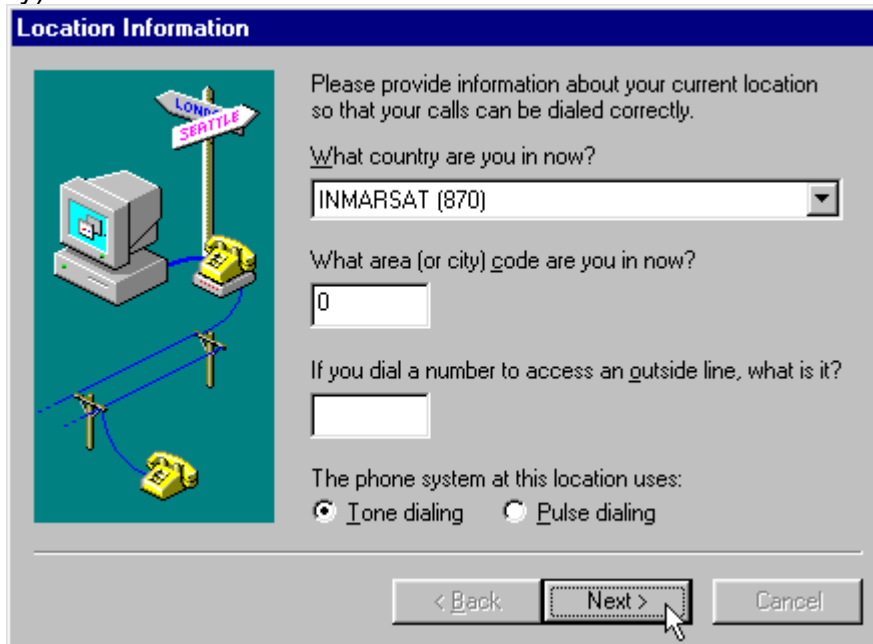


6. Under “**Manufacturers**” choose “**(Standard Modem Types)**”. If you are using an Inmarsat- A terminal, select the manufacturer of your modem.
7. Under “**Models**” choose the modem you have connected to your Inmarsat terminal and press the “**Next >**” button:
  - Standard 19200 bps Modem if you are using an Inmarsat B terminal
  - Standard 9600 bps Modem if you are using an Inmarsat M or Mini-M terminal

## Telenor Data Application Note: Configuring a Modem Connection to Inmarsat Terminals using Windows 98

Doc No. 2003INMC072103-2

- Standard 28000 bps or 33600 bps Modem if you are connecting to the RS-232 port on a Nera WorldCommunicator GAN terminal
  - The modem you have connected to your Inmarsat A or Inmarsat B HSD terminal
  - The ISDN modem you have connected to your Inmarsat GAN/Fleet/Swift terminal
8. Under “**Select the port...**” choose “**Communications Port COM1**” or the port to which the Inmarsat terminal is connected, if different.
  9. Press the “**Next >**” button. If you already entered the location information earlier, Windows will not prompt you for this information again - proceed to step 11. Otherwise, proceed with step 10.
  10. In the “**What country are you in now?**” box select “Inmarsat (870)”. Enter “0” as the area (or city) code. Click “**Next >**” to continue.



11. You have now added a modem to your system’s configuration. Press the “**Finish**” button.
12. Close the “**Modems Properties**” window by selecting “**Close**”.